



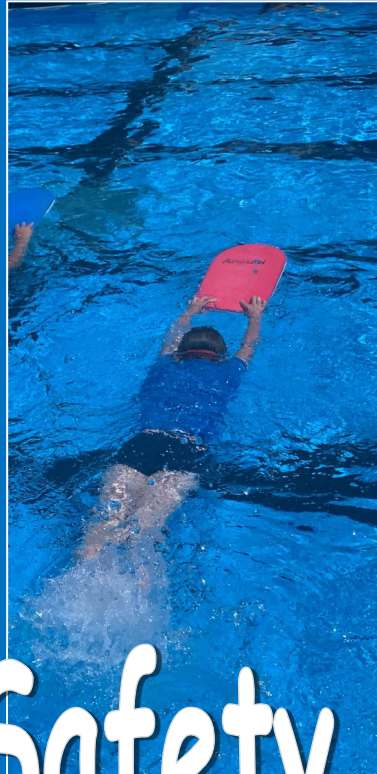
# The Blue and White Armidale City Public School

the heart of Armidale

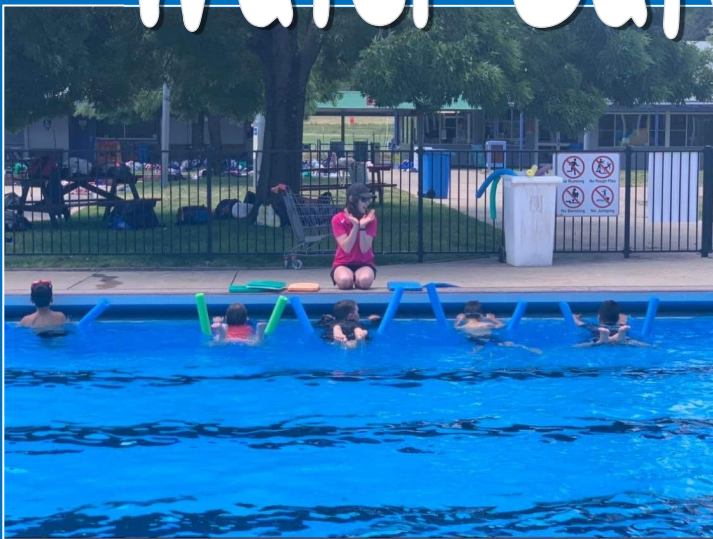
*Quality teaching since 1861*



**30 November 2022**



## Water Safety Program



■ Address: 142-152 Faulkner St, Armidale NSW 2350  
■ Phone: 02 6772 3420  
■ Email: [armidalec-p.admin@det.nsw.edu.au](mailto:armidalec-p.admin@det.nsw.edu.au)

■ Fax: 02 6771 2262  
■ Website: [www.armidalec-p.schools.nsw.edu.au](http://www.armidalec-p.schools.nsw.edu.au)



# Calendar

|        |  |
|--------|--|
| 30 Nov | Kinder Orientation 9:30am—1pm                |
| 1 Dec  | OC 2023 Parent Meeting                       |
| 7 Dec  | Matinee and Night Performance of School Play |
| 13 Dec | Presentation Day—ASC                         |
| 16 Dec | Last Day of Term 4                           |
| 31 Jan | First Day of Term 1 2023 Years 1—6           |
| 3 Feb  | First Day Kindergarten 2023                  |

## P&C NEWS

Come along tomorrow evening to the Christmas in the Mall celebrations (5-9pm) and grab a sausage sandwich from the P and C BBQ. This will make an easy and cheap dinner for the whole family - so everyone will be happy! You will also be supporting ACPS P and C.



Why not also come along to the last P and C meeting of the year next Tuesday, 8 December at 6.30pm at the Bowling Club. This is your last opportunity to have a say and to get something onto the agenda.

There will not be a Mother's Day Fete in 2023. Next year the P and C will focus on providing smaller, more manageable events that can still be enjoyed by all ACPS families. If you would like to see a fete again in 2024 - please consider joining the P and C and demonstrating your support for this event. Organising the fete is a HUGE undertaking and many, many people need to be involved.

## PRINCIPAL'S REPORT

Our thanks go to the wonderful band of Year 6 parents and **Mr Townsend** who helped with the organisation of the Year 6 dinner on Monday evening. The students had a wonderful time socialising with their friends and celebrating their impending completion of primary education.

The 2022 Arts and Sports assembly was held this morning with students recognised for their artistic and sporting achievements. Congratulations go to

**Ayalla, Edward, Hayley, Linh, Meenit, Monty, Rebecca and Riley** on being announced as school counsellors for 2023. School captains will be announced at our annual Presentation Day to be held on Tuesday, 13 December at the Armidale Secondary College. Notes will go home to parents to seek permission for students to travel by bus on the day and for the rehearsal. We are fortunate to have the cost of the buses covered by our generous P&C.

## Tummy bugs impacting learning

This week, we have noticed a significant increase in the number of students and adults suffering tummy bugs. There are a number of viruses that can cause diarrhoea or vomiting. Please seek medical assistance if your child develops a rash, shows signs of dehydration or the symptoms beyond a couple of days.

Hand washing before eating and after using the toilet is the best method of reducing the spread of diarrhoea and vomiting.

**Children should not be attending school** if they have diarrhoea or vomiting and **should not return to school until 24 hours after these symptoms have subsided**. This will reduce the chances of passing the bug to classmates and teachers and further impact on learning. Please send a note to explain the reason for absences or ask for a medical certificate if you take your child to see a doctor.

## Student safety reminder

We ask that parents help us to keep children safe by making **use** of the **pedestrian crossings** on Dangar, Brown, Faulkner and Mann Streets and **not walking near or between buses** when collecting students. We continue to have some **near misses** as children walk through bus zones as buses are driving in the area.

## End of year reports

Student reports will be provided to students on Wednesday, 14 December 2022. Parents are reminded that children in Years 1 - 6 who are achieving at the expected level will be seen as 'sound' and awarded a C grade. Please take the time to read the explanation of grades on the front of each report. Kindergarten students will not receive a grade like older children.

## Class organisation for 2023

As we prepare class allocations for the new year, teachers have been giving a great deal of thought to the best placement of students for learning and well-being. The determination of classes will be based on student need and numbers, with some composite classes in the K-2 area of the school and all classes in 3-6 being stage-based.

If your child is not in Year 6 and will not be returning to Armidale City Public School in 2023, please contact the school as soon as possible. This will help with organisation of classes for next year.

To prepare students for the new academic year, we are planning to hold a transition day for students across our school. This will allow our students to meet with teachers who will be working on their stage in 2023, with at least one of these people likely to be your child's teacher.

### Student use of digital devices

At Armidale City Public School, we understand that mobile phones and digital communication devices may provide students travelling to and from schools with a degree of security. Once at school, students are expected to sign their personal electronic devices that can receive, store, process and share digital information and connect to applications (apps), websites and other online services, such as tablets, smartwatches, smartphones and other devices, in to the office upon arrival at school. These devices will be stored in the front office until they are signed out at the end of the day.

### Dates for the calendar

Holidays commence on Saturday, 17 December. Students going into Years 1 - 6 will return to school on Tuesday, 31 January 2023. Kindergarten will start on Friday, 3 February 2023 after participating in Best Start assessments. More information to be provided to parents of enrolled Kinder students before the end of this year.

Take care,

Deborah Nay  
Principal

## Word of the Week Nuance (NOO-ahnss)

### News from 1C

Wow, we have had a very busy last term of kindergarten. The highlight would have to be our excursion to Thalgarrah. It was so much fun, and we really enjoyed sharing the trip with our friends in KP and K/1G. We have been very busy practising our reading and writing. We have been learning about different celebrations from all around the world and had a great time making red lanterns when we learnt about Chinese New Year. We have used our fabulous listening skills to do a guided artwork of foxes and we are so proud of how they turned out! We cannot believe that we only have a couple of weeks left in kindergarten! We are very excited for the summer holidays and to move into Year 1 next year.

### Mrs Rubie and the amazing Kinder Blue



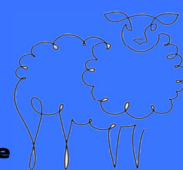
ARMIDALE CITY  
PUBLIC SCHOOL  
Presents



## Green Sheep, Where are you?

**WEDNESDAY  
December 7th**

**Matinee 12pm (doors open 11.45am)  
Evening 6pm (doors open 5.45pm)  
Strictly NO prams or strollers inside  
Tickets \$5 each (online \$5+ processing costs)**



## Green Sheep, Where are You?

We are very pleased to present *Green Sheep, Where are You?*

This is a whole school play and all students (Kinder to Year 6) are involved. Students will be performing in their class item during the play. Some students will be involved in more than one item (Our Aboriginal students and some EAL/D students).

We have 2 performances:

- Wednesday 7 December at 12 noon (matinee)
- Wednesday 7 December at 6pm (evening performance)

**ALL STUDENTS ARE PERFORMING IN BOTH TIME SLOTS.**

We really need all students to come to the evening performance as every student is important to make our play a success.

**Students are required to be at school by 5:30pm for the evening performance.**

**Online tickets are sold out for the evening performance however, a limited amount of evening tickets will be available for purchase at the office from Thursday 1 December.**





### Word of the Week

#### Dictionary meaning

A nuance is a subtle distinction, variation, or quality in something, such as tone, color, meaning, etc.

#### Did You know?

The history of nuance starts in Latin with the noun *nūbēs*, meaning "cloud." *Nūbēs* floated into Middle French as *nue*, also meaning "cloud," and *nue* gave rise to *nuer*, meaning "to make shades of color." *Nuer* in turn produced *nuance*, which in Middle French meant "shade of color." English borrowed *nuance* from French, with the meaning "a subtle distinction or variation," in the late 18th century.